

TE CONNECTIVITY APPLICATION TOOLING

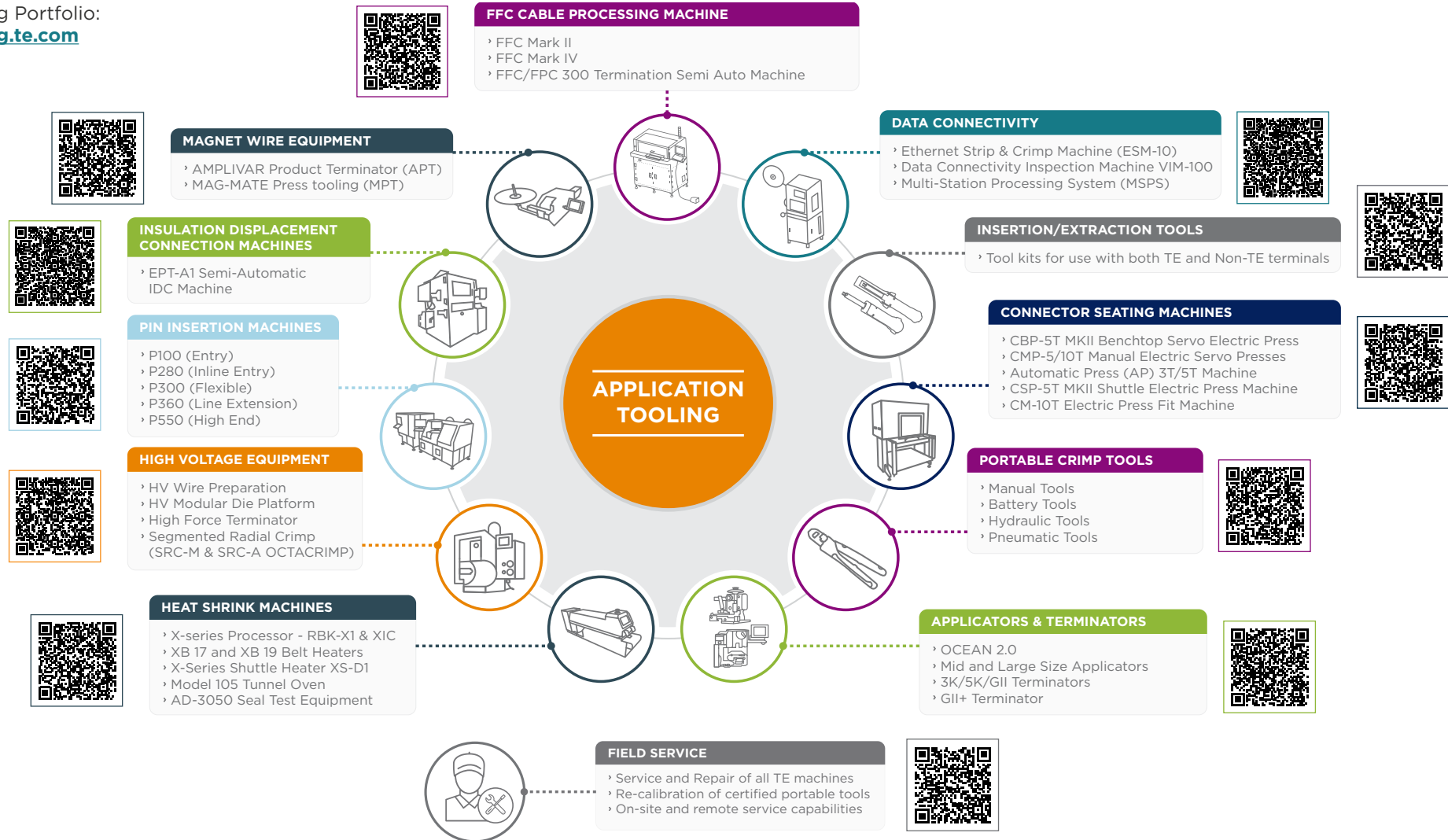


A Complete Line Of Quality Tooling Solutions

About Application Tooling

Application tooling from TE Connectivity (TE) has been relied upon for more than 75 years to deliver high-performing, reliable connections in extreme environments. From crimping a terminal onto a wire or pressing a connector onto a board, our tooling, equipment, and field engineering services are counted on by customers across a range of industries and applications.

Tooling Portfolio:
tooling.te.com



TE CONNECTIVITY APPLICATION TOOLING GLOBAL FIELD SERVICE

Our tooling is supported by an established, experienced and responsive field service organization. TE Connectivity field engineers are located worldwide and are available to assist with on-site and remote service; selection and installation of new equipment; training; and technical support. Service agreements are available to provide protection and support for all your application tooling equipment.

Service/Training Installation

- Practical Training with Machine Setup
- Crimp Technology
- Service Contracts



Factory Repair/Certification

- Hand Tool Repair
- Hand Tool Certification
- Applicator & Terminator Service



Remote Support Capabilities

- Training
- Troubleshooting
- Set-up Support
- Live Streaming



Contact Us

Phone:	Americas	1-800-722-1111
	EMEA	49-6151-607-1518
	APAC	86-021-3325-9030

Tooling Portfolio:	te.com
Field Service:	te.com/fieldservice

"I have previously purchased from other suppliers before and will never go back because of their service.

When I contacted their customer support after an operator jammed the machine, I was told to fill out a form and that they would get back to me in three days. Three days!

I need it working right now because I can't afford the production downtime as my customers are waiting on me to deliver. I like that I can call TE and they will send me somebody from down the street."

- Harness Maker, Americas

te.com

TE Connectivity, PCON, MAG-MATE, SIAMEZE, AMPLIVAR, RAYCHEM, SOLISTRAND, PIDG, FASTON, PLASTI-GRIP, AMPLIMITE, AMPMODU, MATE-N-LOK, POWER TRIPLE LOCK, TERMINYL, AMPOWER, STRATO-THERM, COPALUM, DEUTSCH, AMPSEAL, MCON, TE connectivity (logo) and TE are trademarks owned or licensed by the TE Connectivity Ltd. family of companies. Other products, logos and company names mentioned herein may be trademarks of their respective owners.

The information given herein, including drawings, illustrations and schematics which are intended for illustration purposes only, is believed to be reliable. However, TE Connectivity makes no warranties as to its accuracy or completeness and disclaims any liability in connection with its use. TE Connectivity's obligations shall only be as set forth in TE Connectivity's Standard Terms and Conditions of Sale for this product and in no case will TE Connectivity be liable for any incidental, indirect or consequential damages arising out of the sale, resale, use or misuse of the product. Users of TE Connectivity products should make their own evaluation to determine the suitability of each such product for the specific application.

© 2024 TE Connectivity Ltd. All Rights Reserved.

03/24 Original